



# ABOUT US

We are importers of interior products from Europe and other international countries from last 20 years

Following is the list of products –

1) Sibudesigns – from Austria

These are very high end HIPS sheets from metal, fabric, pu leather in very unique high end textures and patterns in sheet form for exclusive interior use

2) Dekodure – metal laminates from Germany

3) Acroplus – translucent resin – acrylic panels – 5/6/7/8/10mm

4) Cork bricks – cork panels – cork sheets from Portugal

5) Concrete floor and wall – from Holland

6) Mother of pearl in different pattern and different size .

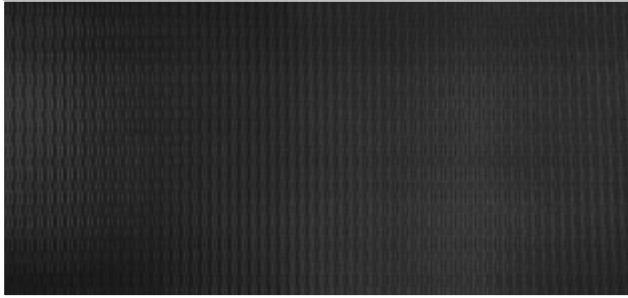
7) Boipetra stone – from Italy – for interior and exterior

8) PVC – super 100% bendable – scratch proof

These all products are very highly exclusive for residential and commercial project for interior designers .



AC MOTION ONE White\_GP



AC MOTION TWO Black\_GP



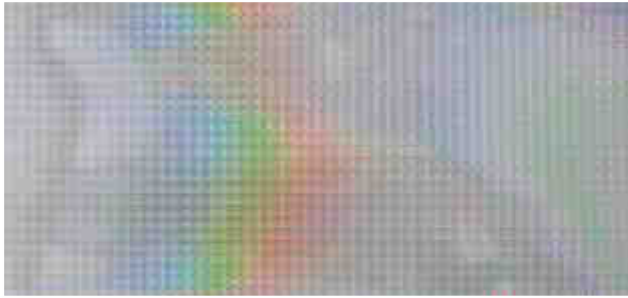
AC TOUCH Creme\_GP



DM Copper Age\_GP



DM FLEUR Silver Brown\_GP



DM Galaxy Silver\_GP



DM Golden Age\_GP



DM Iron Age\_GP





DM Makassar touch 1\_GP



DM MONSOON Vintage Brown\_GP



DM OAKTREE Dark\_GP



DM SAHARA Silber\_GP



DM Tobacco touch 1\_GP



DM Vintage Copper\_GP



DM Vintage Silver\_GP



DM Zebrano Graphite touch 1\_GP



CR CRISTAL ROMBO 85 Bianco\_GP



CR STELLA Bianco\_GP



LL ALISE White Gold\_GP



LL ANTIQUA Gold\_GP



LL Collage Oro\_GP



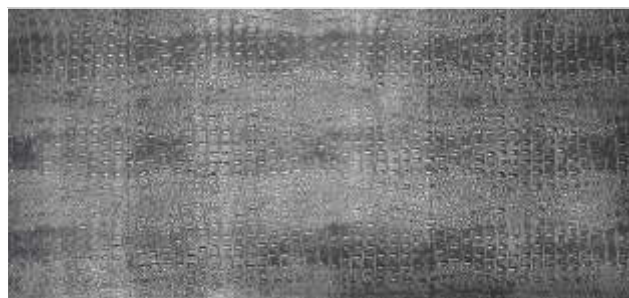
LL Crepa Oro\_GP



LL Crocco Beige\_GP



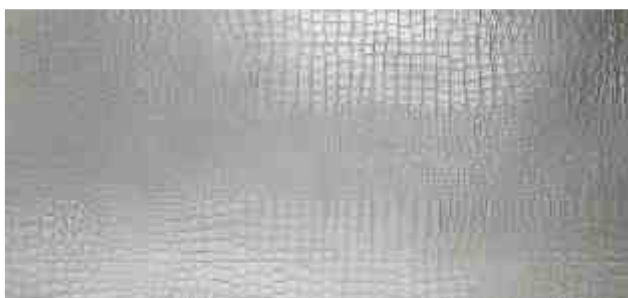
LL Croconova Magic Black\_GP



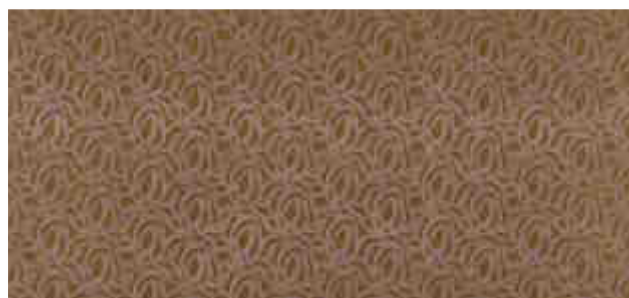
LL Croco Smoke PF met Silver\_GP



LL CROCO Violetta GP



LL Croconova Platin\_GP



LL Eleganza Silver\_GP



LL FLORAL Vintage Silver\_GP



LL FLORAL\_Platin\_GP



LL IMPERIAL White Silver\_GP



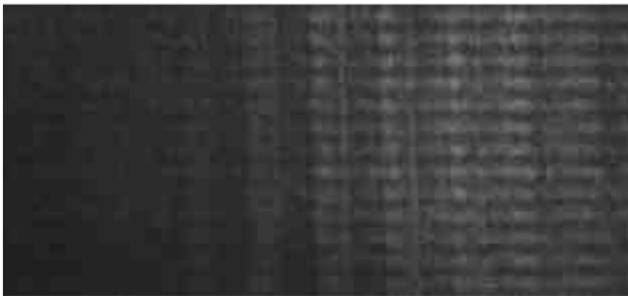
LL LACE Black Platin\_GP



LL LEGUAN Bianco\_GP



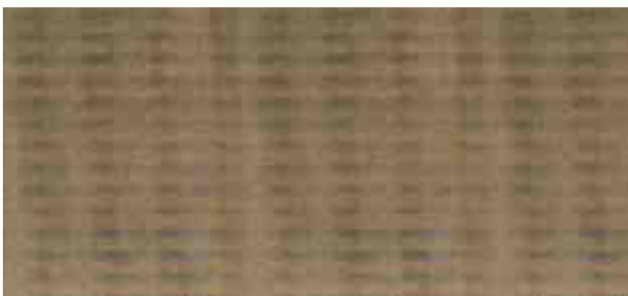
LL LEGUAN Copper ZN 200 Copper\_GP



LL LEGUAN Nero\_GP



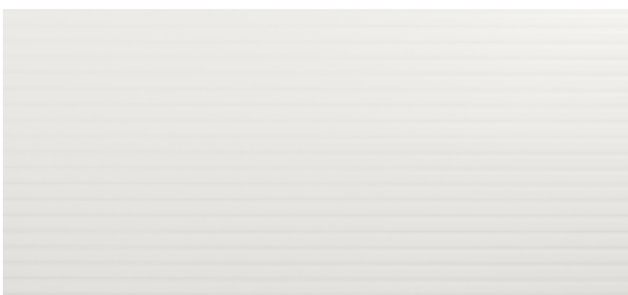
LL Leguan S Nero\_GP



LL LEGUAN Silk\_GP



LL LEGUAN Silver\_GP



LL LOUNGE Bianco\_GP



LL LOUNGE Creme\_GP





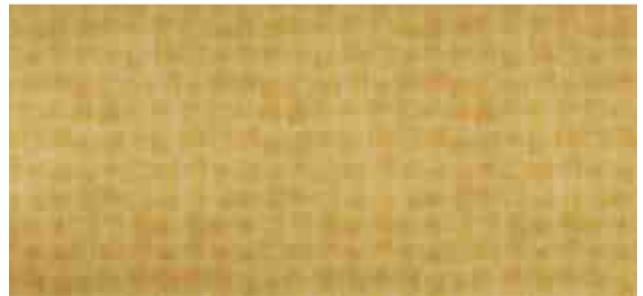
LL LOUNGE Mocca\_GP



LL LOUNGE Nero\_GP



LL LUXURY Bronze\_GP



LL LUXURY Gold\_GP



LL LUXURY green\_GP



LL OXY Terra\_GP



LL PEARLRAY Gold\_GP



LL PELO Marabu\_GP





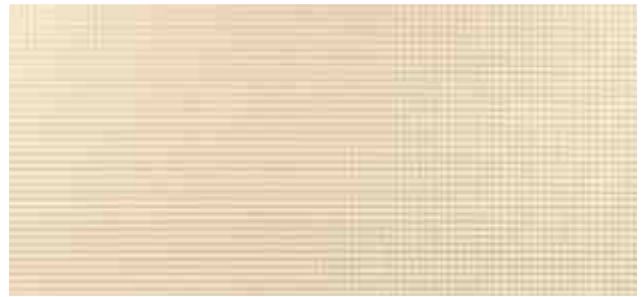
LL PELO Savanna\_GP



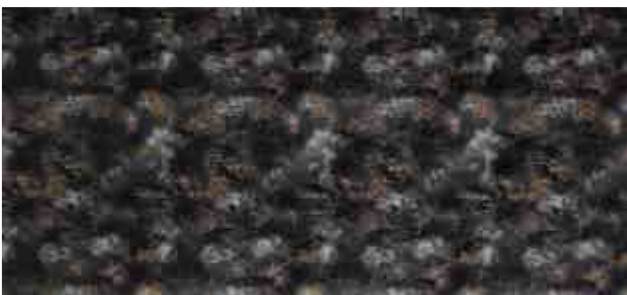
LL Persian Metallic\_GP



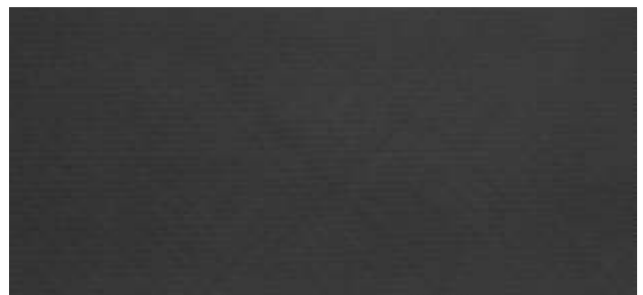
LL QUADRO Bronze\_GP



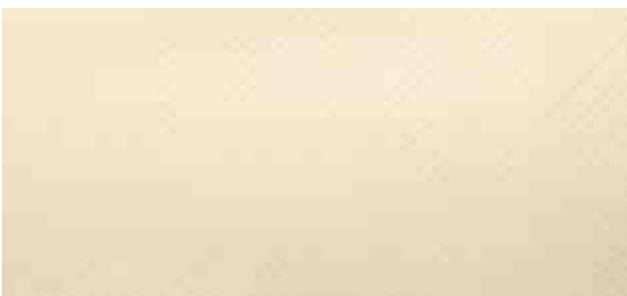
LL QUADRO Creme\_GP



LL Reggae\_GP



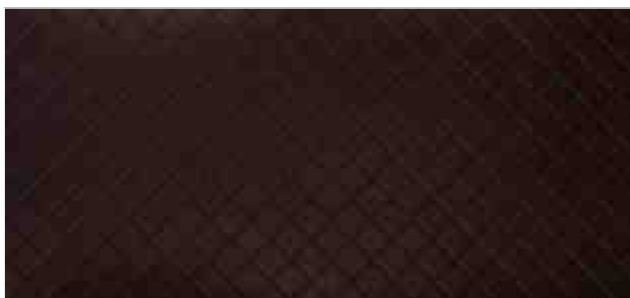
LL ROMBO 12 Nero matt\_GP



LL Rombo 40 Creme\_GP



LL ROMBO 40 terra\_GP



LL Rombo85 Mocca\_GP



LL SNAKE Platin\_GP



LL Struzzo Creme GP



LL Vintage Copper\_GP



LL Vintage Silver\_GP



LL ZN 200 Creme\_GP



MSC DIAGONAL Silver 15x15\_GP



MSC RHOMBUS Silver 15x15\_GP



MSC RHOMBUS Silver 30x30x30x3\_GP



MSC Silver 30x30\_D



SG COCKTAIL Opal\_GP



SG Fleur Black Gold\_GP



SG LACE White Antique Brown\_GP



SG Leguan Copper\_GP



SG Old Platin\_GP



SL ALISE Vintage Copper\_GP





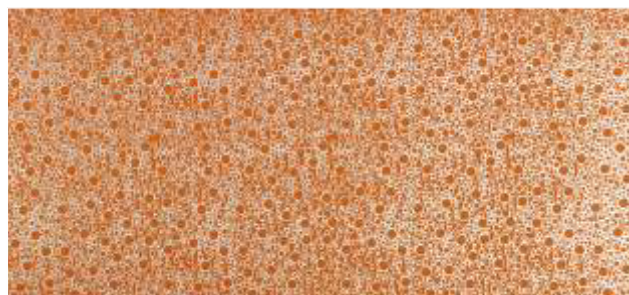
SL ART Golden Age\_GP



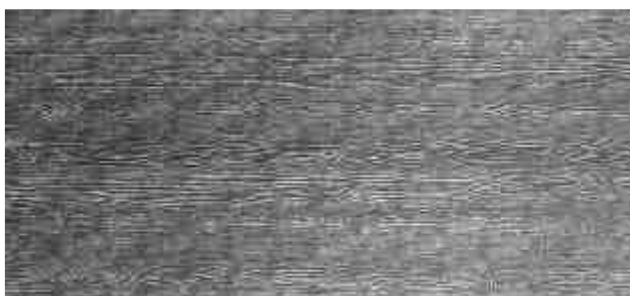
SL ART Iron Age\_GP



SL ART Old Platin\_GP



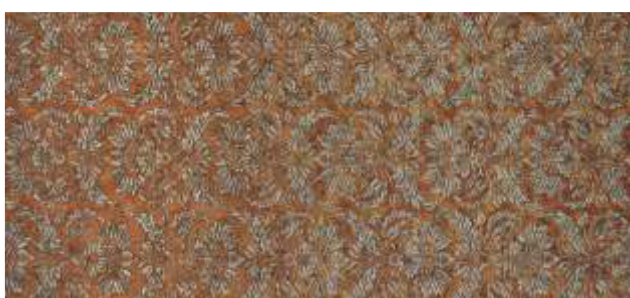
SL Bubble Orange PF Silver\_GP



SL DAKOTA Smoke\_GP



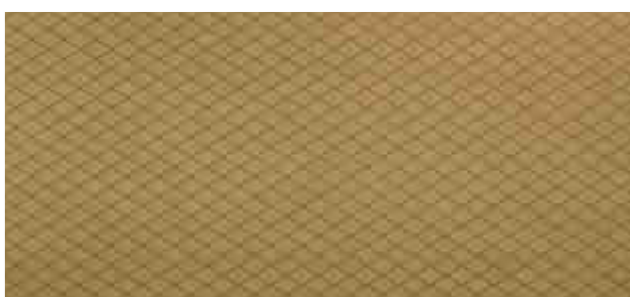
SL IMPACT Vintage Silver\_GP



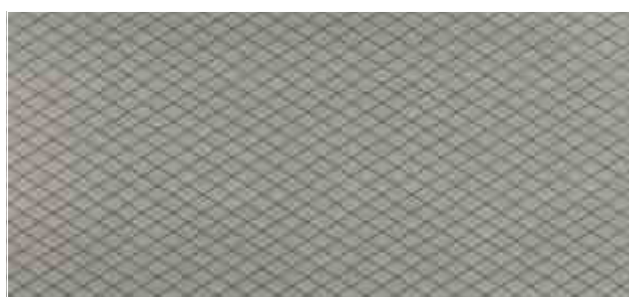
SL IMPERIAL Vintage Copper\_GP



SL LAVA Grey\_GP



SL LINE Silent Gold\_GP



SL LINEA Old Platin\_GP



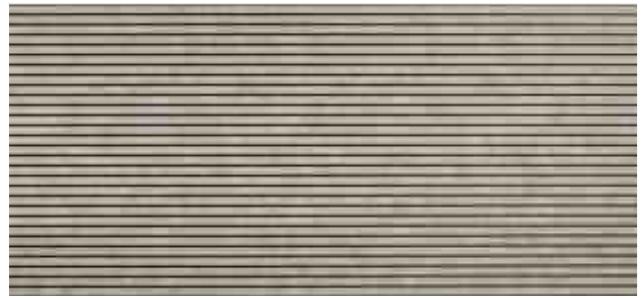
SL MOTION ONE Pearl White\_GP



SL MOTION TWO Grey brushed matt AR\_GP



SL PIANO Golden Age\_GP



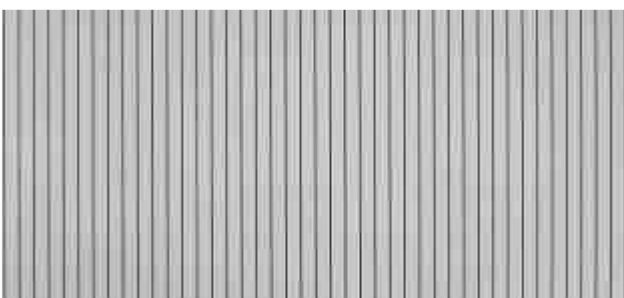
SL PIANO Iron Age\_GP



SL RACE Vintage Silver Bronze\_GP



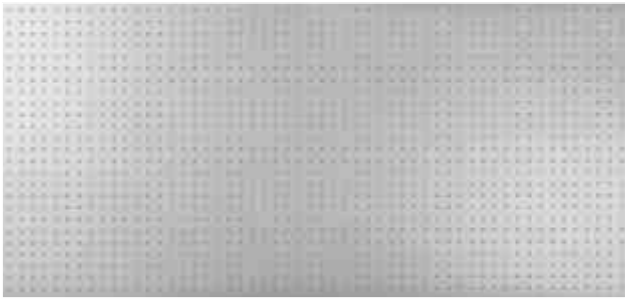
SL RIGATO Silent Gold\_GP



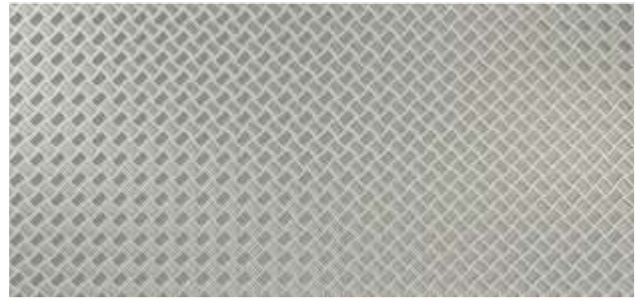
SL RIGATO Silver brushed\_GP



SL RIVET Vintage Silver\_GP



SL SQUARE 3 Silver PF met\_GP



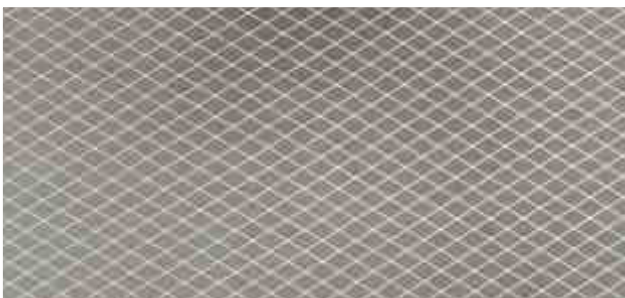
SL Step 5 Silver PF met Silver\_GP



SL WAVE 1 Silver PF met\_GP



SL Wave Silver\_GP



TL Linea Old Platin\_GP



TL Linea Silent Gold\_GP



# SIBU

## APPLICATION PROCEDURE

**Steps to follow:**

1. Clean the application surface properly. There should not be any dust or loose particles lying on the surface. The surface should be dry, clean & level.
2. Before installation Open & unroll the sheets & leave till the impression / tension is released & the sheets become straight.
3. SIBU sheets should be cut from top surface with the help of a paper cutter only.
4. Mainly there are 2 categories Viz: Multi Style & others. We recommend using Multi Style products which are self adhesive, to be used directly without Glue on non absorbent surfaces like laminate, glass, acrylic, metals by just peeling off the back sticker paper.
5. Before using Multi Style (MS) on a porous or highly absorbent surface, e.g. brickwork, gypsum plasterboards, ply or untreated chipboards, we recommend undercoating the ground with Laminate for Self Adhesive sheets. Alternatively you can use SIBU special glue or 3M companies 3M 1000 series adhesive as a suitable coat for ground.
6. Remove the backing cover step-by-step from self-adhesive design sheet (SA), do not touch gluing surface and press the sheet onto the ground as firmly as possible. Do not check the adhesion immediately. The final adhesion power will be reached at room temperature after 24 hours.
7. It is highly recommend to maintain a gap of 1 mm to 1.5mm between the joints & ends of the sheet to take care of thermal expansion & reduction. Alternatively you can also use SIBU Profiles to cover the joints with the recommended gaps.

**Note:** Kindly contact the company representative for any doubts on installation / Application.



009



010



8003



8006-3



8101



8101-1



8101-3



8101-1



6mm



3102



1612



002



3302



3304



003

SPOT UV  
ONLY PRODUCT



830-A

SPOT UV  
ONLY PRODUCT



2101A



021





DS-60A



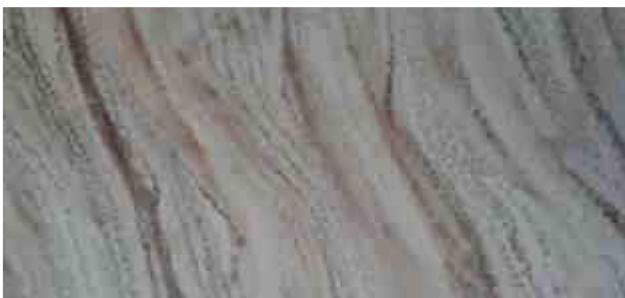
DS-62A



DS-63A



1504-1501



DS66A



NW-9902A



DUCT

7mm



NW-9904A



NW-9905A



NW-9906A



YS-9801A



YS-9802A



YS-9803A

SPO  
ON



WK 3801-A



WK 3802-A



WK 3803-A



WK 3805-A



WK 3806-A



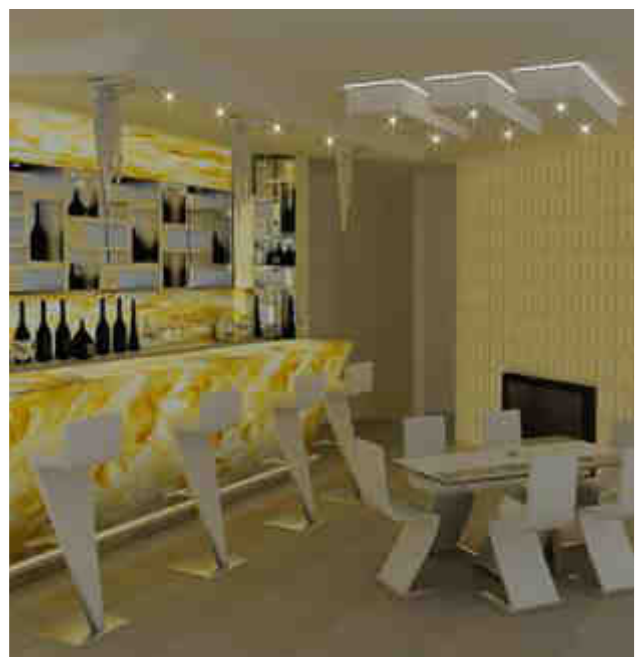
WK 3807-A



WK 3808-A

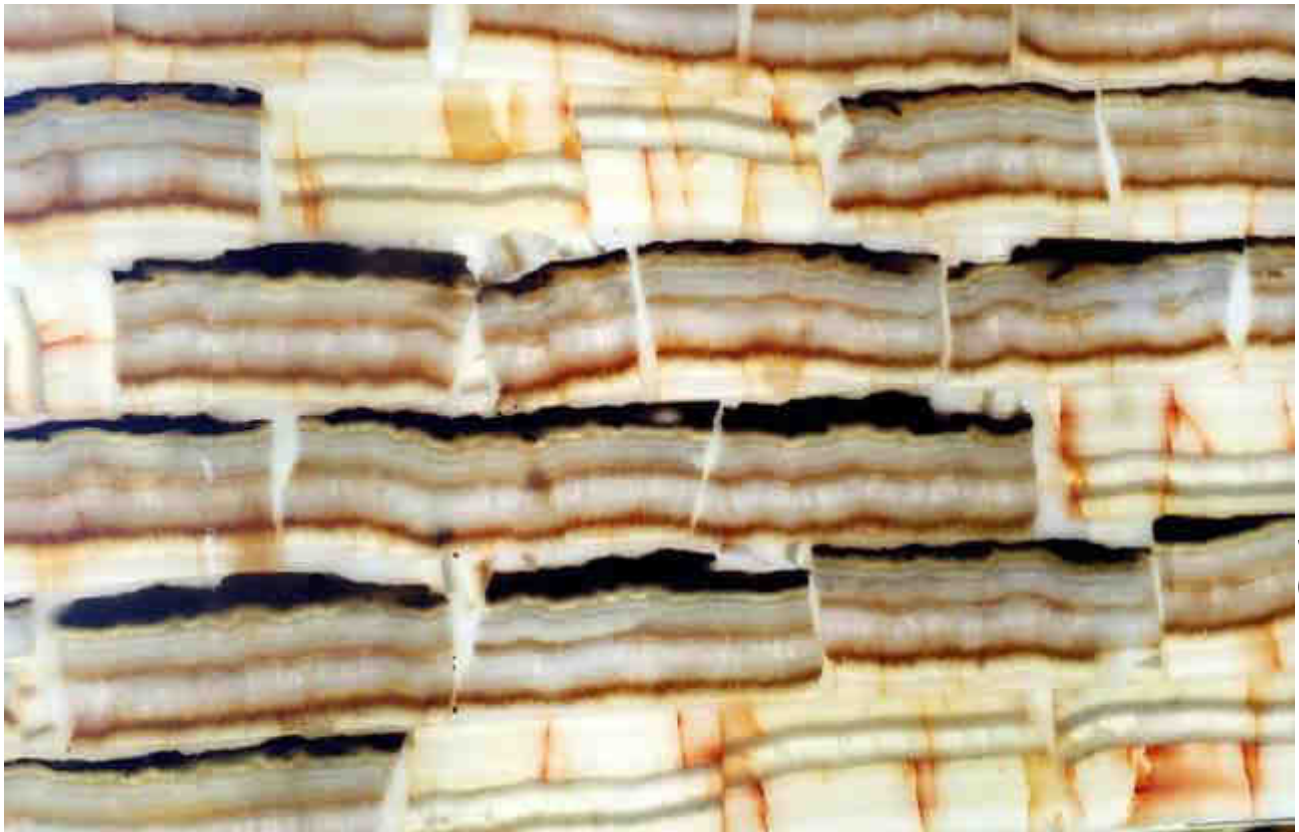


WK 3809-A



JCT

10mm



SPOT  
ONLY I

WK 3701-A



WK 3702-A

## RESIN PANELS / FAUX ALABASTER

### INTRODUCTION TO RESIN PANEL PRODUCTS

Brand: **ACROPLUS**

The main material: made from polyester resin with filler (ATH)

Resin panel Series are casted by high molecular polyester resin, according to the veins of natural marble. With the lighting effects, it will show its unique effect. It gets the better of marble and turns out to be not easy to break inexpensive and easy to operate. Meanwhile, it has the advantages of being bent and seamless joint process. So far, it is popularly used all over the world. Attributes of resin panel products Range of application decorative wall panel, bar top, table top, light-through structure, translucent walls, ceilings, bar tables, lamps and columns of public buildings and household decoration works. Performance of resin panel products. Possessing the natural texture of marbles, smoothness of ceramics and the elasticity of lumber, this resin panel Series could be processed without joints. Besides, they offer many designs to choose and are easy to clean and convenient to fix. Scientific tests verify that these resin panel Series has neither radioactive pollution nor toxic side effects. So far, these environmental friendly stones have been widely applied into various kinds of decoration projects. Process and installation of resin panel products Fabrication, easy to fabricate, install. can fabricate on the spot. Wood-cutting saw or marble-cutting saw for cutting, hand drill machine for hole-drilling, router machine for edge-chamfering, bending by heat.

### Light Source

We suggest you use cold light, such as LED light, the distance between light and panel should be more than 15cm.

### Notice

If panel be used outdoor, or the temperature of place where the panel used in, is above 60°C, please ask us for opinion. And also for the same, when you want to use it as ceiling, the area of unit one is big than 0.5m<sup>2</sup>.

### Maintain

Case 1: Dust on the Translucent Stone can be cleaned with feather duster or rag.

Case 2: Once there is some normal dirt or stain stick with translucent stone, suds or detergent is the only one needed.

Case 3: But if you get knife-cut, scratch or empyrosis, when it's not serious, in our product without careful, wiping it with sand paper and water is enough, there is no need to wax it, but it will be helpful to recover its luster.

### Specifications of resin panel products

The standard size of Alabaster Sheets panel Series is 1220mm x 2440mm, with the thickness of 6mm, 8mm and 10mm. Products can also be customized as per clients' different requirements. **Standard size:** 1220mm x 2440mm.

**Max size:** 1220mm x 3050mm. **Thickness:** 6-20mm, customs size and thickness or special shape available.

**Technical Standard: GB6566-2001, Quality Supervise No. 040**

No.	Inspected areas	Unit	Standard	Result	Conclusion
1	Density	g/cm <sup>3</sup>	≥1.2	1.4	Qualified
2	Hygroscopic Capacity	%	≤0.4	0.05	Qualified
3	Stretching Strength	Mpa	≥15	38	Qualified
4	Compressed Pressure	Mpa	≥20	100Mpa Unbroken	Qualified
5	Flexural Ability	Mpa	≥10.0	68.2	Qualified
6	Hardness	Degree	≥80	88	Qualified
7	Heat Resistance	----	Put it into 100°Cboiling water for 1Hr,no bubbles appears. no	Pass	Qualified
8	Boiling Water Resistance	----	No obvious change in color	Pass	Qualified
9	Cigarette Burn Resistance	----	No marks left behind, but colors slightly turn in yellow (Put the burning cigarette on the surface 60sec)	Pass	Qualified
10	Acidity Resistance	----	(Permeated in 30% hydrochloric acid for 24Hrs) no obvious change for appearance	Pass	Qualified
11	Alkalinity Resistance	----	N (Permeated in 10% alkali for 24Hrs) no obvious change for appearance	Pass	Qualified
12	Stain Resistance	----	Tea stings, coffee stings and ink can be cleaned easily by normal cleaning detergent (Maintain the stings on product surface 24hrs)	Pass	Qualified
13	Radioactivity	1ra	Out 1.building material	0.99	Pass
14		1r	1.Building material≤1.0 2.Decoration material≤1.3	0.77	Pass

The resin panel product is carried out by hand. The sample just shows the partial effect. Its colour, effect and veins are not absolutely the same.

**Cutting:** Wood saw,ceramic saw are all applicable for cutting,and portable manual driller for drilling

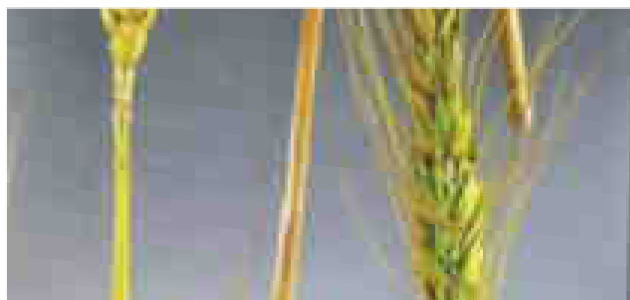
**Joint:** A kind of resin based adhesive g to joint two piece together.come to seamless effect.

**Shade Degradation:** The panel has over 10years warranty. After 2 years, the shade will be discolor over time. It will not fade in one time.but you have to find the shade fade compared with a fresh color panel. As the raw materials is polyester resin. Its has a oxidation reaction over time.

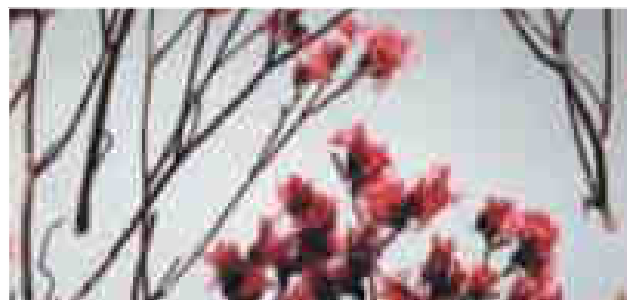
**Note:** If any dirt on the surface,use soap water or ammonia detergent to clean then dry cloth to clean the surface. If any scratch, grind it by using sand paper,first 800# (with water), second 1000# (with water), then use wax (usually car wax is ok.) to polish it. Better use fluorescent lamp or neon light or LED,> 15cm away from the resin panel. If between 10~15cm, better use a reflecting paper on the lamp back panel.

# CLEAR ACRYLIC

10mm



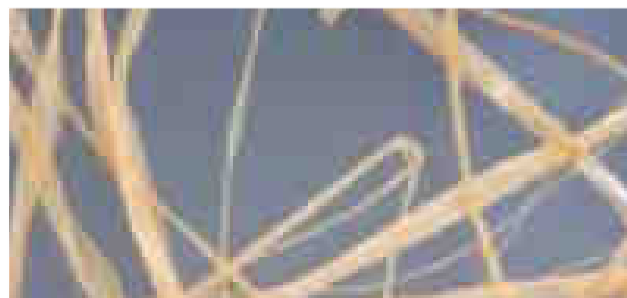
FF - 0025



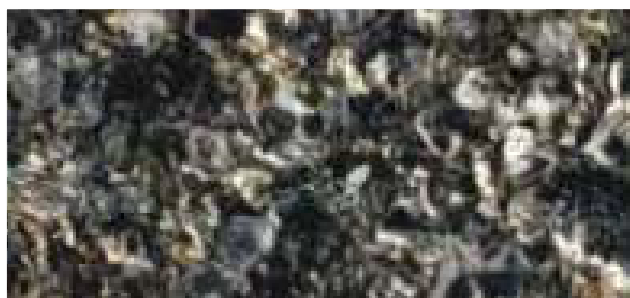
FF - 0049



FF - 0062



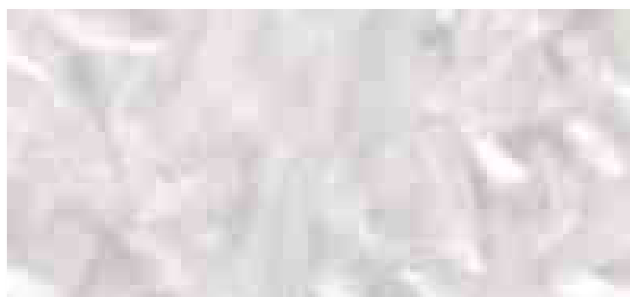
FF - 0077



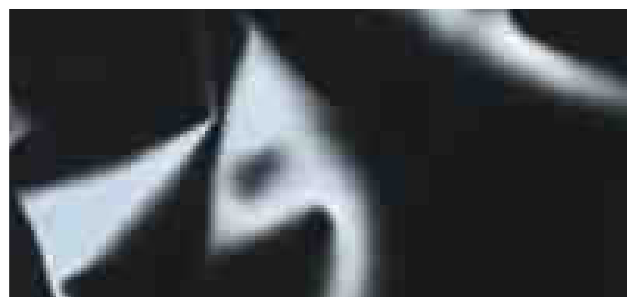
FF - 0089



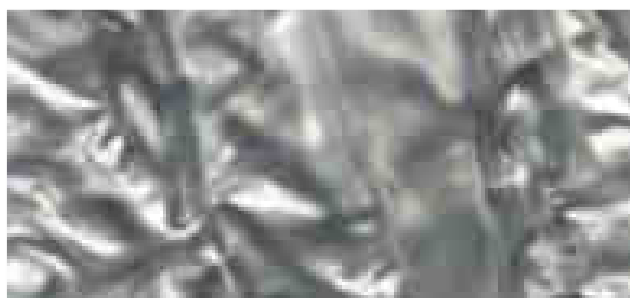
FF-0035A



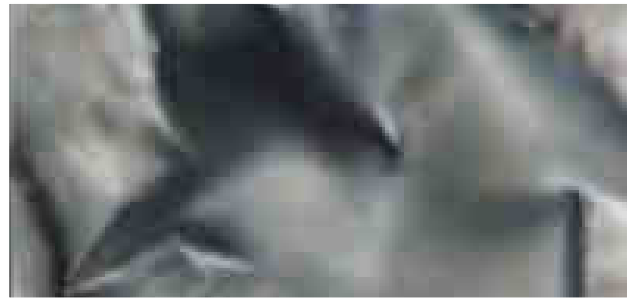
S - 0005



S - 0010



S - 0013



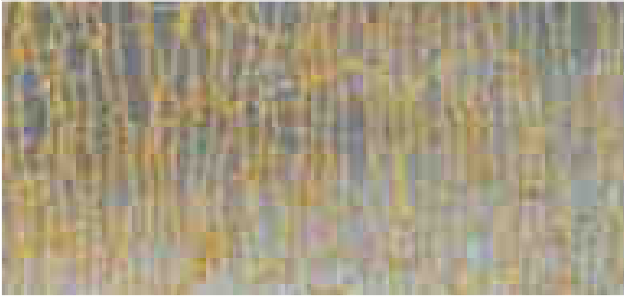
S - 0024

DUCT

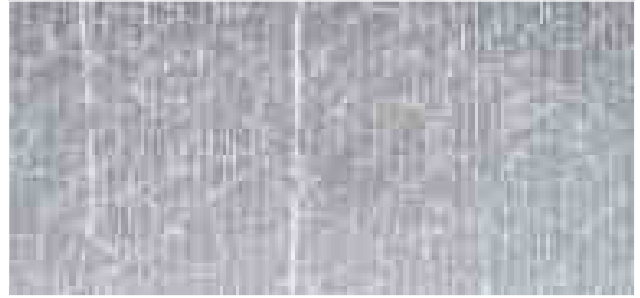


# CLEAR ACRYLIC

10mm



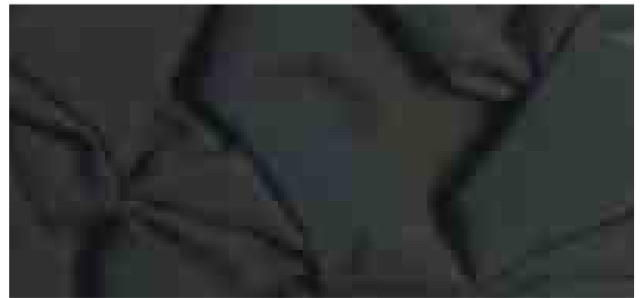
S - 0026



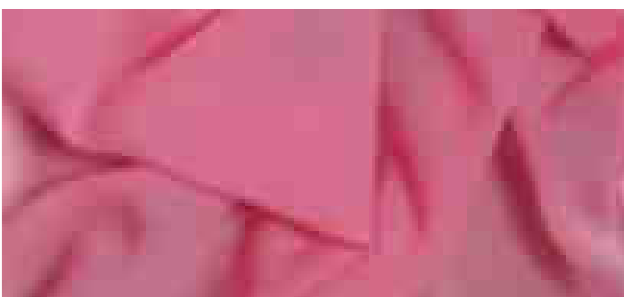
S - 0041



S - 0046



S - 0049



S - 0074



S - 0069



S - 0079



S - 0082

SPO  
ONL



APS-010



APS-046



APS-047



APS-052



APSDS-001



APSDS-032



APS-060



APS-067



APS-WP002



APS-WP004



ST-001



ST-002



ST-003



ST-004



ST-005

450mm x 450mm



OW-15406



OW-15501

SPOT  
ONLY



OW-15401



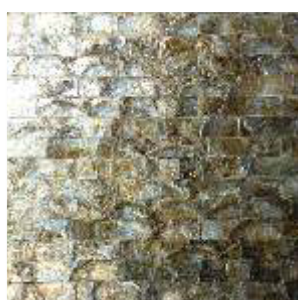
OW-15506



OW-15206



OW-15207



OW-15-B-01



OW-15-B-06

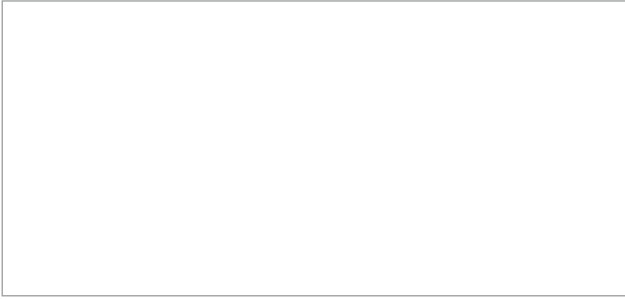


OW-15-D-01



OW-15-D-06

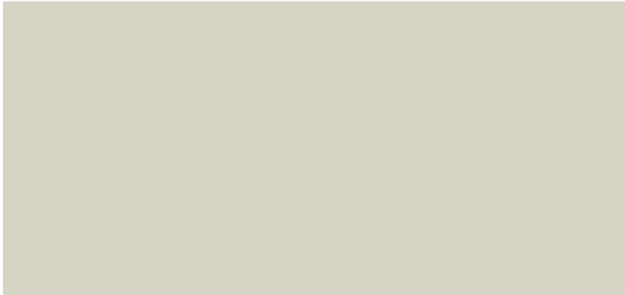
TT  
CT



SS - 1001



SS - 1002



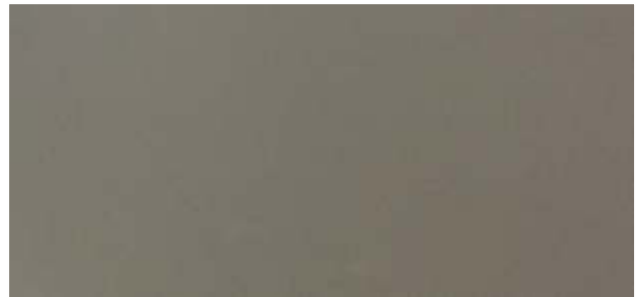
SS - 1003



SS - 1004

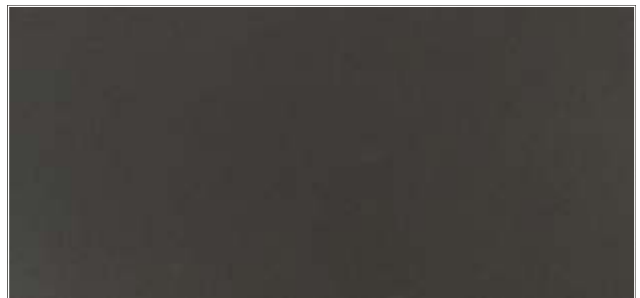


SS - 1005

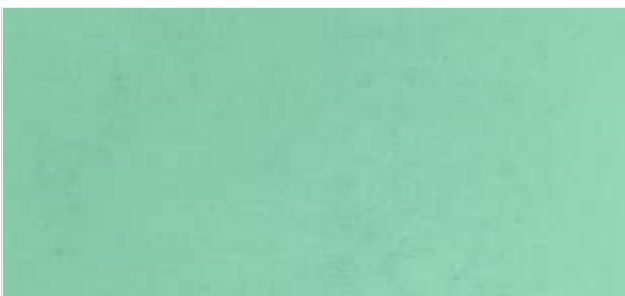


SS - 1006

- 1.3mm
- Silky Matt
- Scratch Proof
- Bandable



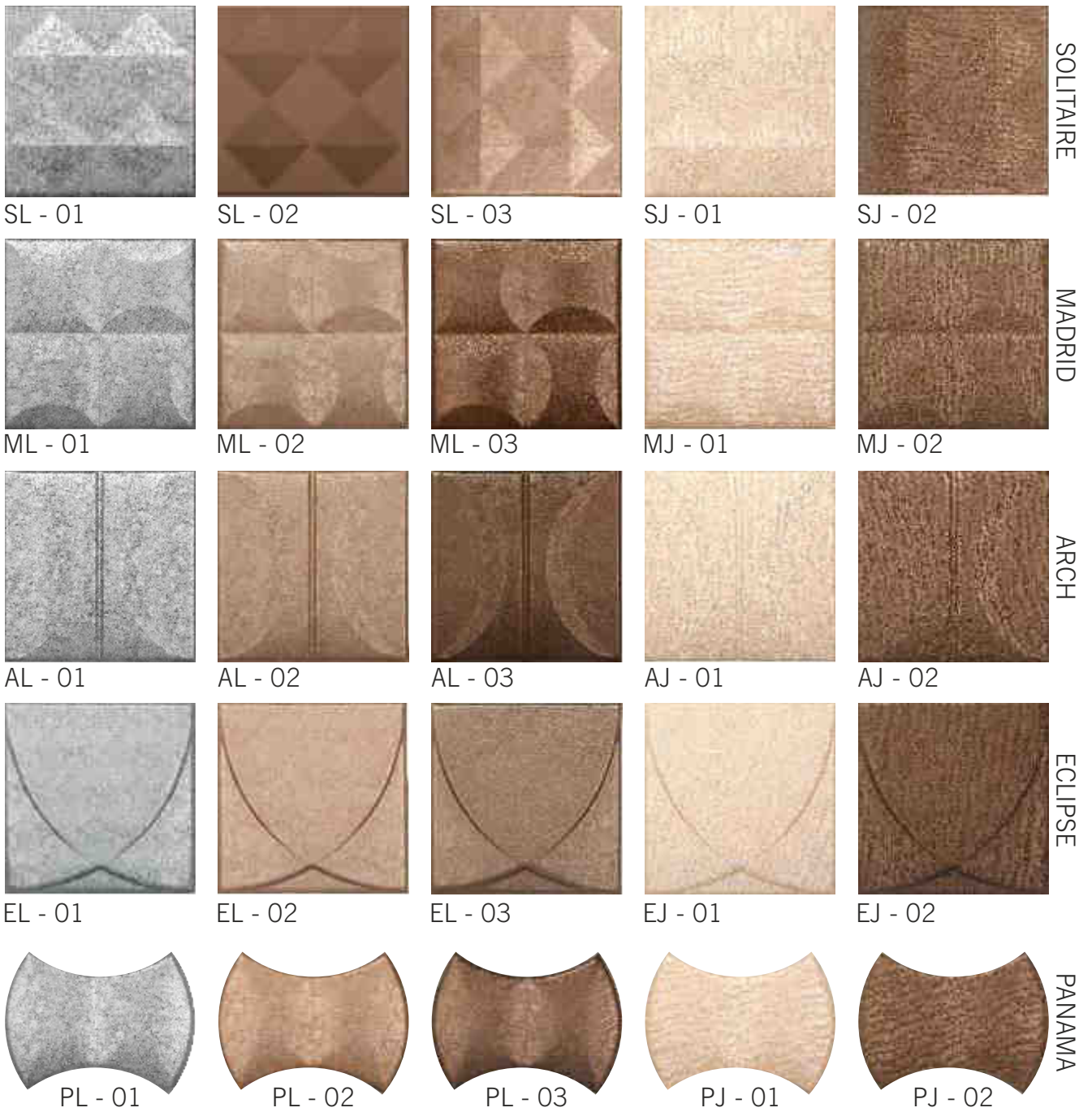
SS - 1007



SS - 1008



SS - 1009



**COLOR / FABRIC OPTIONS**



# CORK



CR-10111



CR-1086



CR-1069



CR-1061



CR-1055



CR-1053



CR-1052



CR-1051



CR-1038



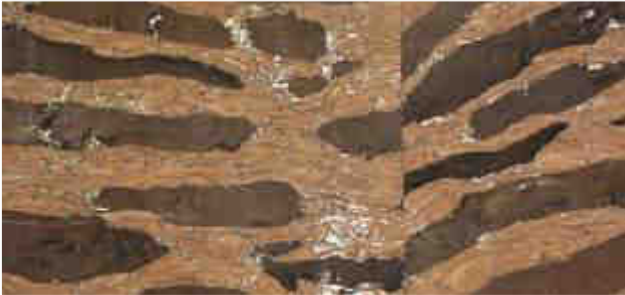
CR-1036



CR-1009



CR-1002



CR-1035



CR-1033



CR-1090



CR-1018



CR-1014



CR-1013



CR-1011



CR-1010

# CORK



CR-10112



CR-1122



CR-1015



CR-1118



CR-1026



CR-1020



CR-1088



CR-10132



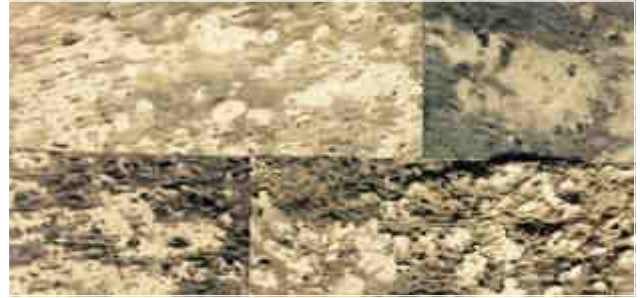
CR-1047



1200mm X 600mm



CORK 1000



CORK 1000/S



BRANCO



BRANCO MOSAIC



BRICK MOSAIC



CHIP MOSAIC



CORK MOSAIC



STRIP MOSAIC



TRAZO

# CORK WALL | EXCLUSIVE

1200mm X 600mm



VINTAGE



SHIRAZ



SHELL CORK



AROMA



ARC



OAK



HEXA



TREEK

# CORK WALL | PREMIUM

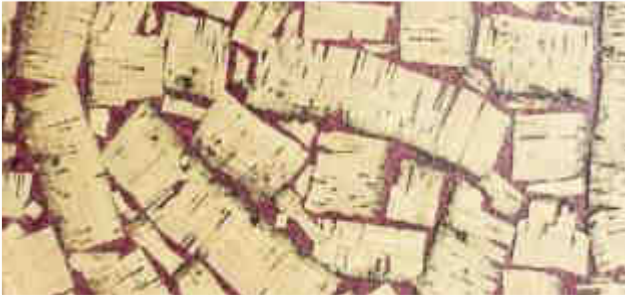
1200mm X 600mm



LEO



ARTISAN



RED ARTISAN



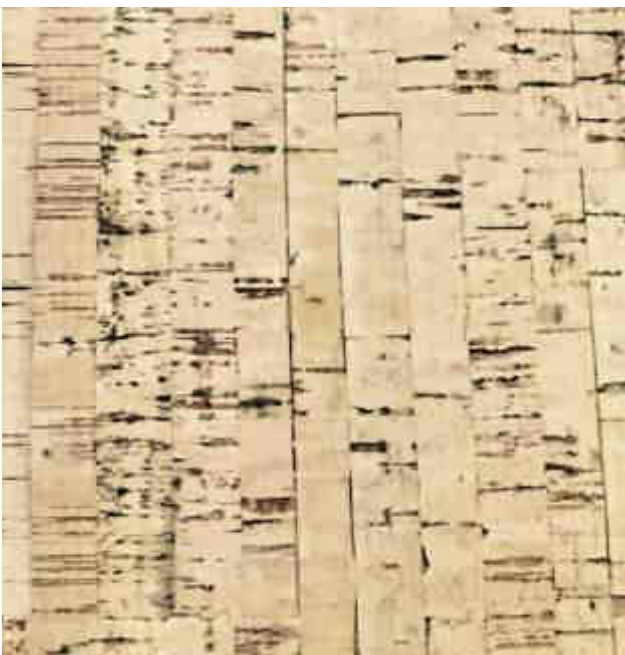
GINGER



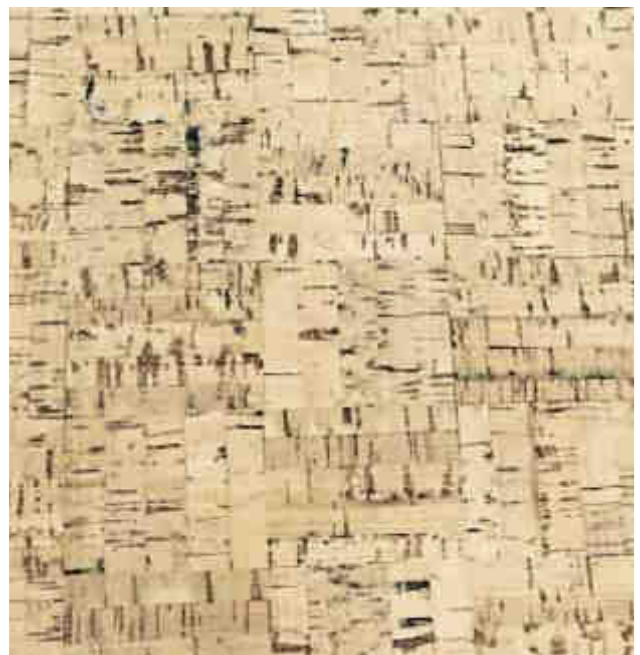
MARBO



GRAIN



LINEA



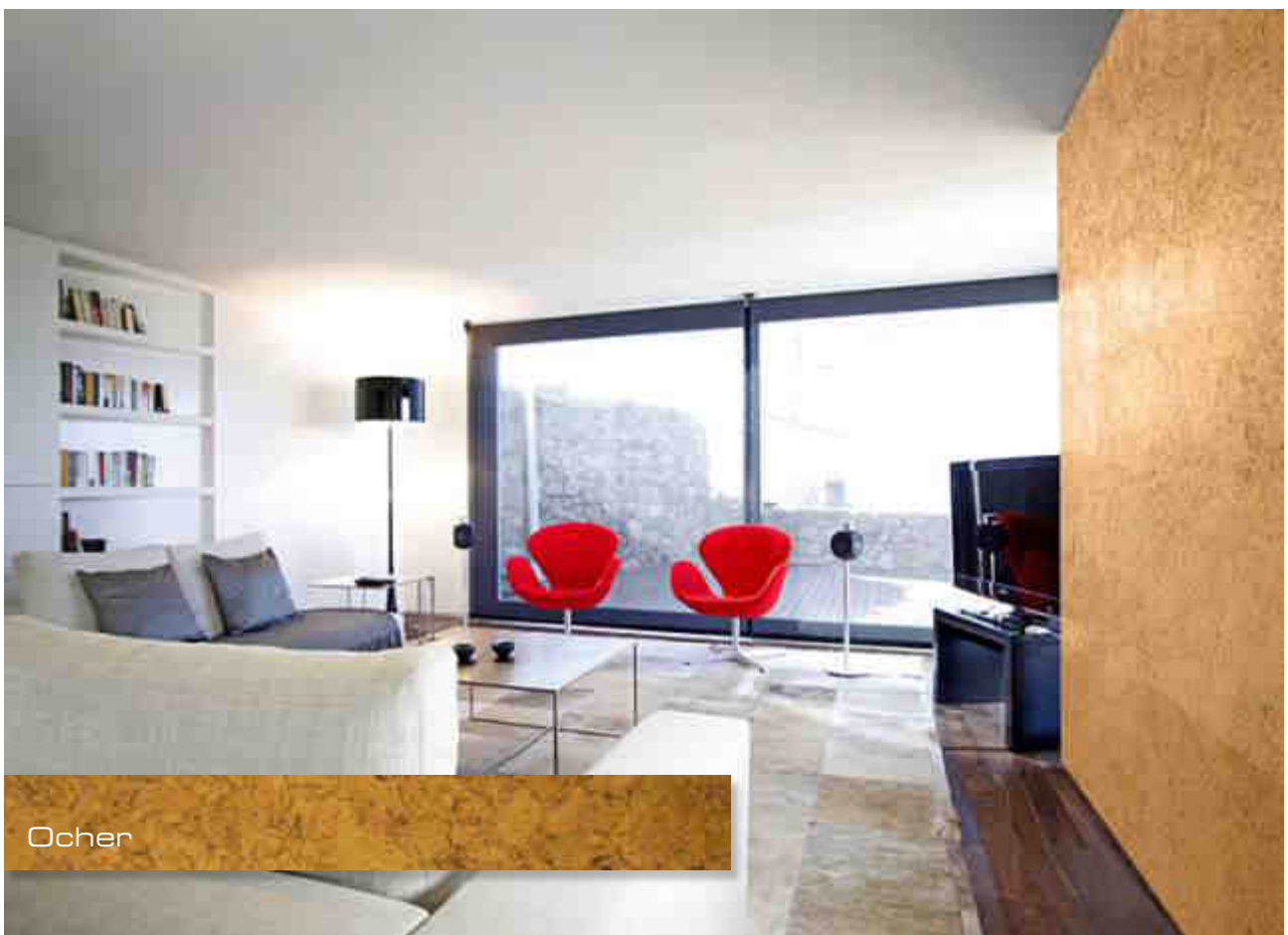
CROSS

# CWC WALL PANEL

3mm X 900mm X 150mm



# CWC WALL PANEL



# CWC BRICK WALL PANEL



Snow



Natural



Green



Terracota



Brown



Black

Biopietra® means embracing an ecological cause; it also means taking care of our customers' well being. Biopietra®'s choice is a choice that combines aesthe; cs together with ethics. Biopietra® can never be replaced by superficial imitations, since it is primarily a product with a high ecological content. Biopietra®'s mission is to improve its customers' quality of life by offering to the market products that comply with the technical requirements laid down by the competent authorities and compatible both with the Environment and Human Health.



Research and innovation inspire the creation of high quality and beautifully designed new products that are crucial to the new demands of contemporary decoration. The ever growing awareness towards environmental issues has led to a new culture of purchasing. Correct information therefore plays a fundamental role in the end user's choice. Biopietra therefore suggests to its customers a wide range of wall claddings certified for Green Building and not harmful to Human Health with the aim of improving the quality of life. Design and elegance, the combination to meet the needs of contemporary living; warmth and tradition to rediscover the pleasure of tradition and of the past, innovation and creativity to manufacture claddings with a creative design and extraordinary quality for contemporary living.



MONTEBELLO (QUARZO)

## LIVING COLLECTION

A Collection of stone claddings with natural charm and modern taste. The Living collection comes in product lines of great value and personality that enrich your home with a charming atmosphere. The range of colours and surface textures make the Living Collection the exceptional choice for locations with contemporary taste.



MONTE BIANCO (QUARZO)



VENEZIA (QUARZO)

## TRADITION

Those who choose Biopietra Tradition know what they want. Stone claddings that recuperate the tradition and taste of traditional homes of the past, while being innovative claddings with minimized thickness and in line with modern needs of Man and the Environment. Biopietra® Tradition Collection is harmony between avant-garde and tradition: the perfect solution for homes of today and tomorrow.



MONTEBELLO (AMBRA)



MONTEBELLO (CROMITE)





SIERRA NEVADA (ZOLFO)



SIERRA NEVADA (QUARZO)

## CERTIFICATIONS & GUARANTEE

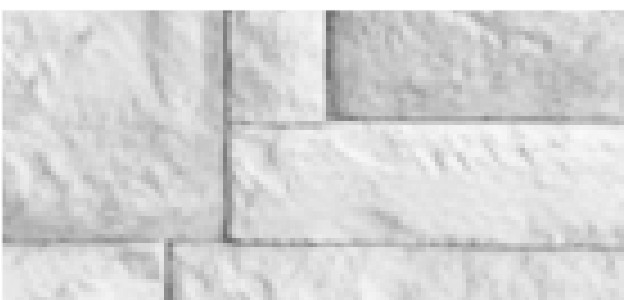
Biopietra®'s entire range of products, manufactured in Italy for over 15 years are subject to strict controls in accordance with current European Standards: each and every item is guaranteed and certified in order to attest its quality. Only those who have ANAB and ICEA Certifications are accredited for Green Building and are really BIO. Beware of imitations and especially by those who self-declare themselves BIO based only on single laboratory tests without showing authentic and valid certifications. Your health is very important.

### CLADDINGS:

**Frost resistance:** 100 freezing thawing cycles, in compliance with the UNI EN ISO rules.

**Fire resistance:** Non-combustible class 0, in compliance with the ISO/DIS rules.

**Colour fastness to light:** No change, in compliance with the DIN rules.



ACROPOLI WHITE SAND



ACROPOLI SAND



MONTEBIANCO SAND



VENEZIA SAND

Designed for installation in domestic and commercial interiors, the subtle clean lines of the micro bevelled panels compliment most modern living areas from kitchen diners and living rooms to bedrooms and bathrooms. Installed in more traditional settings Concreate adds the contemporary twist.

## Innovation

An innovation in flooring Concreate was born from a brief, which asked for a sustainable and more environmentally sensitive alternative to traditional floor coverings. Whilst also being quicker and more economical to install than conventional poured concrete systems.

## Eco-Solution

Each panel is produced using the latest machine technology to engineer what is ultimately a natural product that is fully biodegradable. There are no harmful chemicals used in the production, which is situated next to the source of the raw materials the bulk of which are minerals such as magnesium oxide and cement. These natural minerals are mixed and pressed with natural fibres and layers of recycled textiles.

## Natural Finish

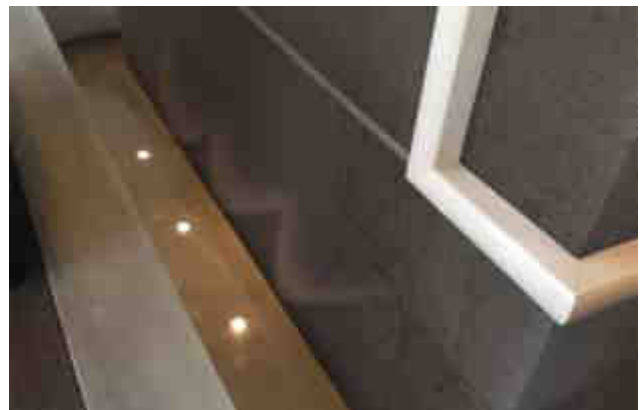
The resulting panels are set outside to air cure, giving each surface a unique patination as only occurs in nature. Once cured the panels are kilned to produce an ultra durable floor that is both tactile and aesthetically pleasing. The aesthetic qualities are further enhanced with a machine application of Danish oil, which seals the floor and allows for straight, forward maintenance making life easy.



WHITE



NATURAL GREY





DARK GREY



OAK





**CLASSIC**  
*Curated Masterpieces*

**KIARRA DESIGNS**

Shop #7, S.V. Road, Khira Nagar  
Santacruz (W), Mumbai 400054

T : 022-66949188 / 89

F : 022-66949190

E : [kiaraindia@gmail.com](mailto:kiaraindia@gmail.com)

W : [www.kiarradesigns.in](http://www.kiarradesigns.in)